



# iPad Essentials 101 – Part 1



 860-776-3306

 RGE4Help@gmail.com

 [www.redglenelectronics.com](http://www.redglenelectronics.com)



# iPad Essentials 101 – Part 1

Getting Comfortable

A Beginner-Friendly Session

Welcome, and thanks for being here.

Today is about getting comfortable—not perfect, not fast—just comfortable.

If this device has ever felt a little intimidating, that ends today. We're going to take it one simple step at a time. Nothing fancy. Nothing overwhelming. Just steady progress.



860-776-3306



RGE4Help@gmail.com



www.redglenelectronics.com



# Welcome CSC Members

Relaxed, no-pressure session

Practical everyday use

Welcome, Cromwell Senior Center members.

You're in the right place. This is a no-pressure session. You don't need to remember everything—we're just looking for a few things that click.

If you walk out of here feeling even a little more comfortable, that's a win.



 860-776-3306

 RGE4Help@gmail.com

 [www.redglenelectronics.com](http://www.redglenelectronics.com)

## Meet Jim Kallaugher: **CSC Member & Volunteer**



### Red Glen Electronics

Founder and operator, with friendly “**Home Tech Help for Hire**” for Boomers.



### Weekly Tech Tuesdays

**Volunteer tech support** and guidance to community members on Tuesday afternoons.



### Monthly Tech Presentations

Conduct **tech topic seminars** for better understanding & to encourage confidence

**With 25+ years of experience making technology clear, simple, and accessible.**



860-776-3306



RGE4Help@gmail.com



www.redglenelectronics.com

# You Belong Here



## You belong here

No matter your starting point. Some people are brand new, some have tried before. Doesn't matter.



## No wrong questions

Every question is a good question. Ask freely, ask often.



## No wrong pace

This is your pace, not anybody else's.



860-776-3306

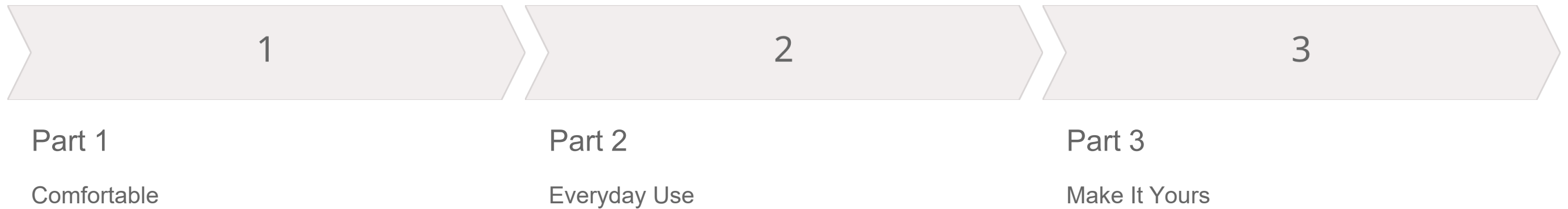


RGE4Help@gmail.com



www.redglenelectronics.com

# A 3-Part Journey



We've split this into three parts for a reason.

Today is just about getting comfortable. Next time, we'll start using it more. And then we'll make it your own.

We're not trying to do everything today—and that's on purpose.



860-776-3306



RGE4Help@gmail.com



www.redglenelectronics.com

# You Can't Break It

You can't break it

Mistakes are reversible

Nothing permanent

This is the most important idea of the day—you cannot break this iPad.

You might tap the wrong thing. You might end up somewhere strange. Happens to everyone.

Nothing explodes. Nothing disappears forever. Apple is not sending a squad car to your driveway.

Everything can be undone.



860-776-3306



RGE4Help@gmail.com



www.redglenelectronics.com

# Unboxing

Take your time

There's no race here.

No rush

Look at it, hold it, get a feel for it.

Get familiar

Familiarity is the first step toward confidence.

Opening the iPad is your first step.



860-776-3306



RGE4Help@gmail.com



www.redglenelectronics.com

# What's in the Box

iPad	Cable
Adapter	

What you see is what you get—simple and straightforward.

No mystery parts, no extras you need to figure out.

Just the basics to get you going.



 860-776-3306

 RGE4Help@gmail.com

 [www.redglenelectronics.com](http://www.redglenelectronics.com)



# Meet Your iPad



## Power

The button that starts everything.



## Volume

Control what you hear.



## Charging

Keep it powered up and ready.

Once you know where the buttons are, this stops feeling like a mystery.

Now it becomes a tool. And tools are meant to be used—not feared.



 860-776-3306



RGE4Help@gmail.com



www.redglenelectronics.com

# Turn On

01

## Press button

Press and hold the side button.

Press and hold the button, and you're in business.

That simple action is your starting point every time.

02

## See screen

The display lights up.

03

## Swipe

Swipe to get started.



860-776-3306



RGE4Help@gmail.com



www.redglenelectronics.com



## Apple Logo

Startup screen

Normal

Wait

When you see the Apple logo, everything is working exactly as it should.

That's your signal to just relax and let it load.



 860-776-3306

 RGE4Help@gmail.com

 [www.redglenelectronics.com](http://www.redglenelectronics.com)

# Setup Basics

1

## Language

Choose your preferred language.

2

## Region

Select your location.

3

## Steps

Follow along one step at a time.

The setup walks you through everything.

You don't need to know what's coming next—it will guide you step by step.



860-776-3306



RGE4Help@gmail.com



www.redglenelectronics.com

# Wi-Fi

Connect

Internet access

Required

Wi-Fi is what brings this device to life.

Without it, it's limited. With it, it opens up the world.



 860-776-3306

 RGE4Help@gmail.com

 [www.redglenelectronics.com](http://www.redglenelectronics.com)

# Apple ID



## Account

Your personal Apple account.



## Access

Unlocks apps, music, and more.



## Sync

Keeps everything connected and up to date.

Your Apple ID is your key.

It connects everything—apps, photos, settings—all tied to you.



860-776-3306



RGE4Help@gmail.com



www.redglenelectronics.com

# Privacy

## Choices

You decide what to share.

## Flexible

Nothing is set in stone.

## Adjust later

Change your mind anytime.

You are always in control.

Nothing here locks you in. You can change things later if needed.



860-776-3306



RGE4Help@gmail.com



www.redglenelectronics.com

# Home Screen

Starting point

Safe place

Return anytime

This is your home base.

If you ever feel lost, come back here. Think of it like your front door—everything starts and resets here.



860-776-3306

RGE4Help@gmail.com

www.redglenelectronics.com

# Tap

## The Core Action

A tap is all it takes.

No pressure, no force—just a gentle touch.

## Key Points

- Light touch
- Primary action
- Simple



860-776-3306



RGE4Help@gmail.com



www.redglenelectronics.com



# Swipe

## Slide finger

Glide your finger across the screen.

## Navigate

Move between screens and pages.

## Explore

At first it feels odd—then it becomes second nature.

Swiping lets you move around naturally.



 860-776-3306

 RGE4Help@gmail.com

 [www.redglenelectronics.com](http://www.redglenelectronics.com)

# Core Gestures



Tap



Swipe



Scroll



Home

These are your building blocks.

You don't need to master them today—just get comfortable seeing and trying them.



860-776-3306

RGE4Help@gmail.com

www.redglenelectronics.com

---

# Practice



Try

Give it a go—there's no wrong move.

This is your time to try things.

Nothing goes wrong here. This is how learning happens.



Explore

Wander around and see what you find.



Repeat

This is how learning happens.



860-776-3306



RGE4Help@gmail.com



www.redglenelectronics.com

# Open Apps

01

## Tap icon

Find the app on your home screen and tap it.

02

## Use app

Do what you need to do inside the app.

03

## Return home

Come back to your home base when done.

Apps are just tools.

Tap to open, use it, and come back home. That's the whole cycle.



860-776-3306



RGE4Help@gmail.com



www.redglenelectronics.com

# Comfort Practice

Slow pace

Repeat

Build confidence

Confidence comes from repetition—not speed.

Take your time.



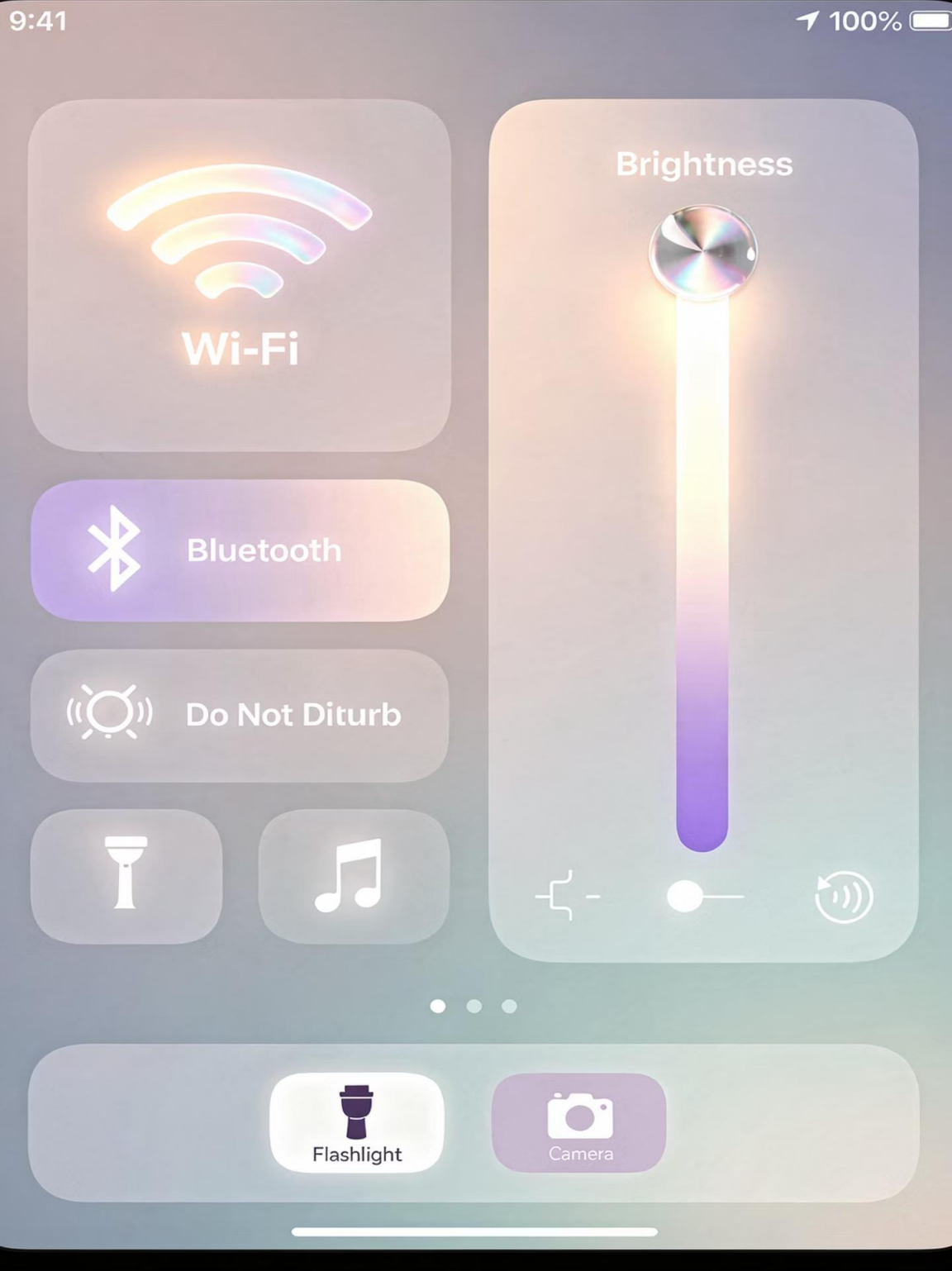
860-776-3306



RGE4Help@gmail.com



www.redglenelectronics.com



# Control Center

## Quick tools

Everything you need at a glance.

## Swipe access

Open it with a simple swipe from the corner.

## Settings

Adjust brightness, volume, and more.

Think of this as your shortcut panel.

Quick access without digging through menus.

# Dock

## Your Speed Dial

The Dock is your speed dial.

Your most-used apps are always right there.

## What It Does

- Favorites — your go-to apps
- Quick launch — one tap away
- Always there — at the bottom of every screen



 860-776-3306

 RGE4Help@gmail.com

 [www.redglenelectronics.com](http://www.redglenelectronics.com)

# App Library



## All apps

Every app you have is stored here.

If you can't find something, it's not gone.

It's just stored differently.



## Organized

Automatically sorted into categories.



## Searchable

Can't find something? Just search for it.



860-776-3306



RGE4Help@gmail.com



www.redglenelectronics.com

# Settings

## Adjust

Customize how your iPad works for you.

## Explore safely

Look around without worry.

## No risk

Nothing breaks. Everything can be changed back.

Settings look intimidating—but they're safe.

You can explore without worry.



860-776-3306



RGE4Help@gmail.com



www.redglenelectronics.com

# Notifications

Alerts

Messages

Manageable

You're in control of what gets your attention.



860-776-3306



RGE4Help@gmail.com



www.redglenelectronics.com



# Safari



## Browse

Visit any website with ease.



## Search

Type a question or topic and find answers.



## Explore

The whole internet is at your fingertips.

This is your window to the internet.

Simple and powerful.



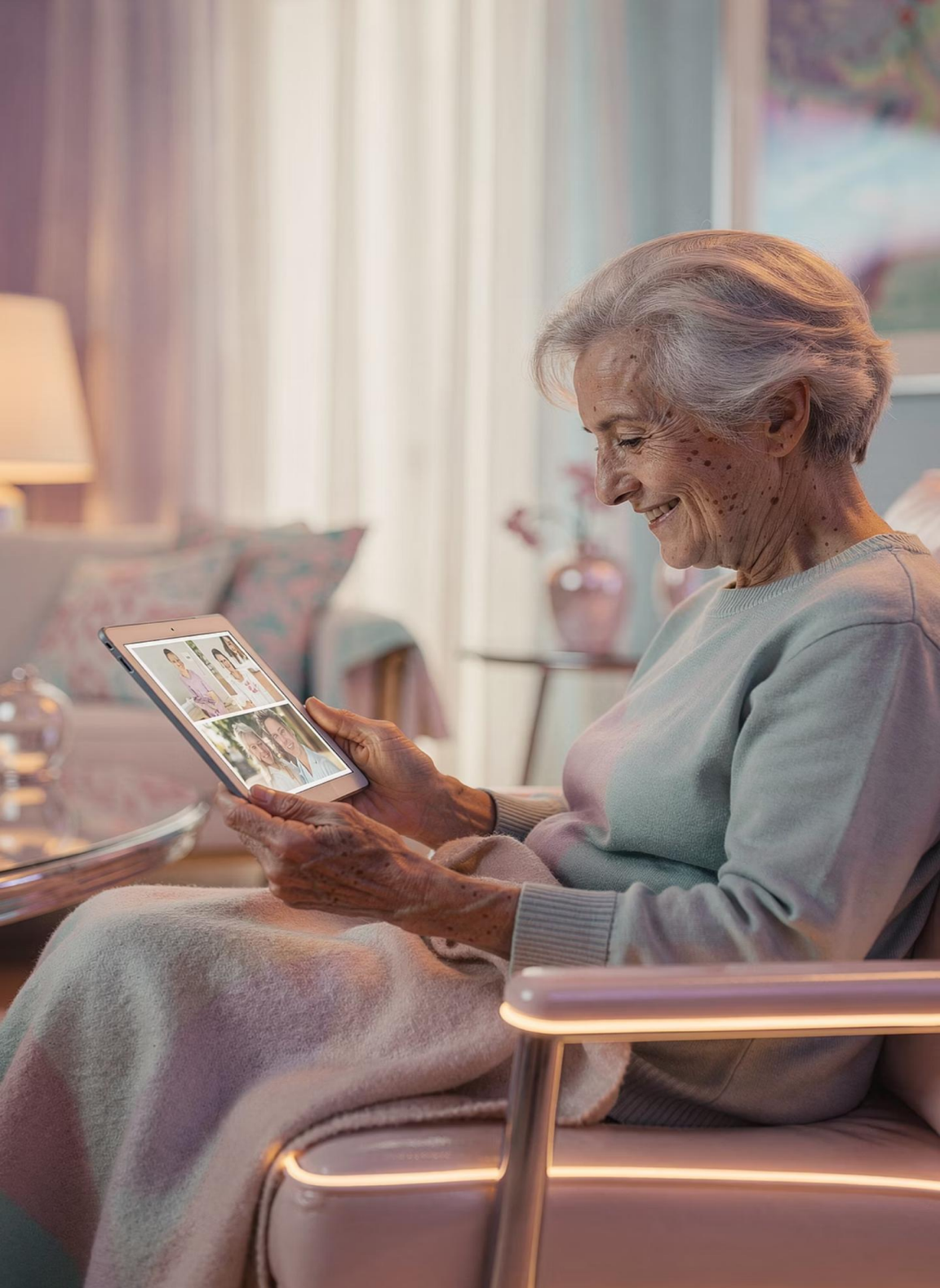
 860-776-3306



RGE4Help@gmail.com



www.redglenelectronics.com



## Photos

View

Zoom

Swipe

Photos are meant to be enjoyed.

Simple gestures bring them to life.



 860-776-3306

 RGE4Help@gmail.com

 [www.redglenelectronics.com](http://www.redglenelectronics.com)

---

# Notes

## Write

Jot down anything you want to remember.

## Save

Everything saves automatically.

## Organize

Keep your thoughts tidy and easy to find.

Notes quickly becomes a favorite.

Simple, reliable, always there.



860-776-3306



RGE4Help@gmail.com



www.redglenelectronics.com



# Keyboard

On-screen

Tap typing

Flexible

Typing takes time.

And that's perfectly okay.



 860-776-3306

 RGE4Help@gmail.com

 [www.redglenelectronics.com](http://www.redglenelectronics.com)

# Typing Comfort



Slow

There's no timer. Go at your own pace.

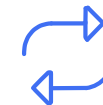
Slow and steady wins here.

Accuracy grows with time.



Accurate

Focus on hitting the right keys, not speed.



Practice

Accuracy grows with time.



 860-776-3306

 RGE4Help@gmail.com

 [www.redglenelectronics.com](http://www.redglenelectronics.com)

# Siri

## Just Talk

If typing feels like too much—just talk.

Siri is there to help.

## What You Can Do

- Voice help — ask anything out loud
- Ask — get answers instantly
- Command — open apps, set reminders, and more



 860-776-3306

 RGE4Help@gmail.com

 [www.redglenelectronics.com](http://www.redglenelectronics.com)

# Mistakes

Normal

Expected

Helpful

Mistakes aren't problems—they're part of learning.

Everyone makes them.



860-776-3306



RGE4Help@gmail.com



www.redglenelectronics.com

# Getting Unstuck

01

## Pause

Take a breath. Don't panic.

02

## Home

Press the home button to return to your safe place.

03

## Retry

Try again from a fresh start.

When something feels off—pause, go home, and reset.

That solves most situations.



860-776-3306



RGE4Help@gmail.com



www.redglenelectronics.com

# Confidence



## Repeat

Do it again and again.



## Explore

Try new things without fear.



## Grow

Every little success counts.

Confidence builds in small steps.

Every little success counts.



 860-776-3306

 RGE4Help@gmail.com

 [www.redglenelectronics.com](http://www.redglenelectronics.com)

# Review

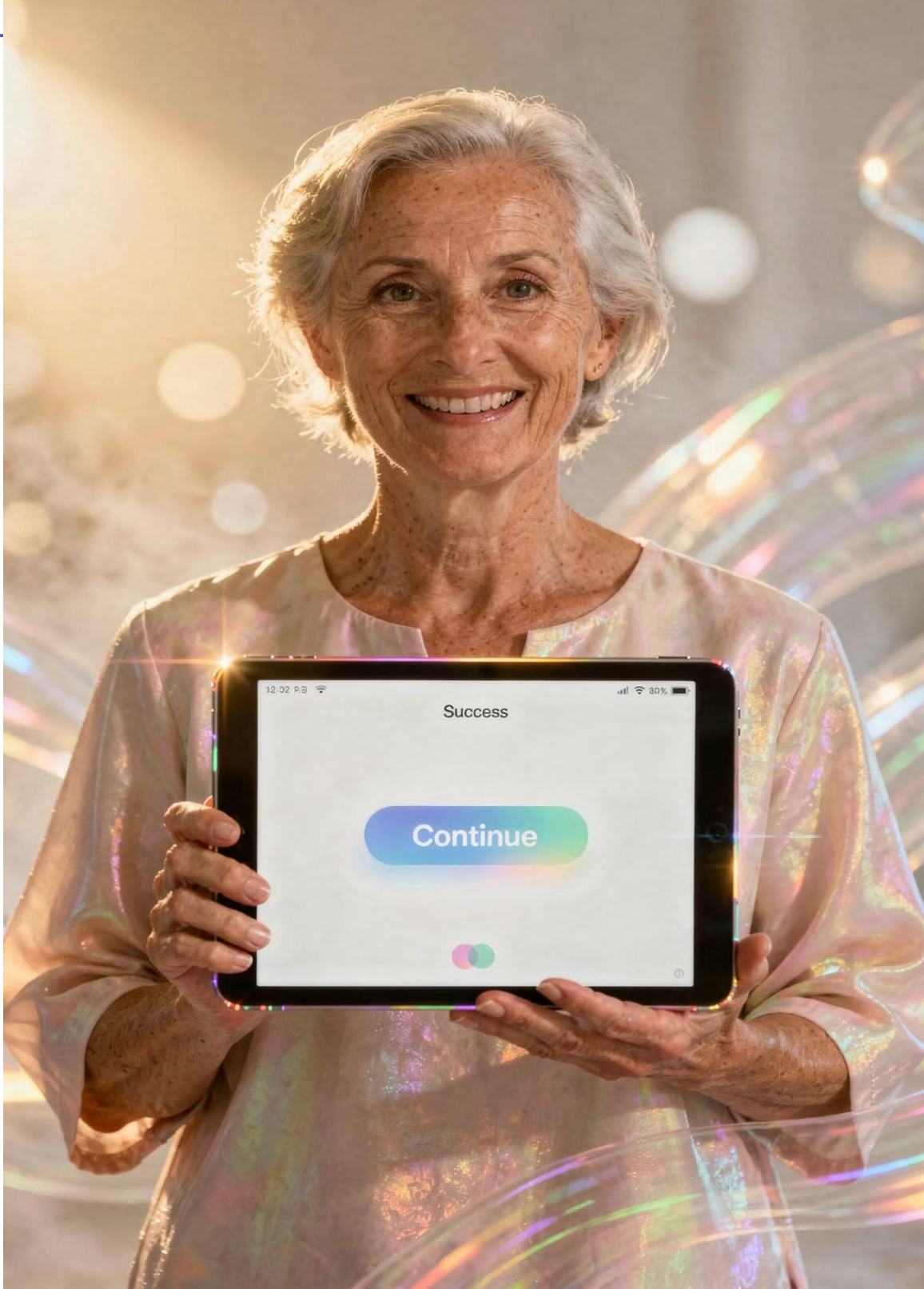
You learned

You tried

You progressed

You've already made real progress today.

More than you probably expected.



860-776-3306

RGE4Help@gmail.com

www.redglenelectronics.com

# Your Compass

Can't break it

Nothing is permanent. Everything is reversible.

No rush

Your pace is the right pace.

Mistakes OK

They're expected and helpful.

Stay curious

Curiosity is your greatest tool.

Keep these ideas with you—they'll guide everything you do going forward.



860-776-3306



RGE4Help@gmail.com



www.redglenelectronics.com

# Wrap-Up

Great job

You showed up

You learned

You showed up. You tried. You learned.

That's how confidence is built—step by step.

And you've just taken the most important first step.



 860-776-3306

 RGE4Help@gmail.com

 [www.redglenelectronics.com](http://www.redglenelectronics.com)