

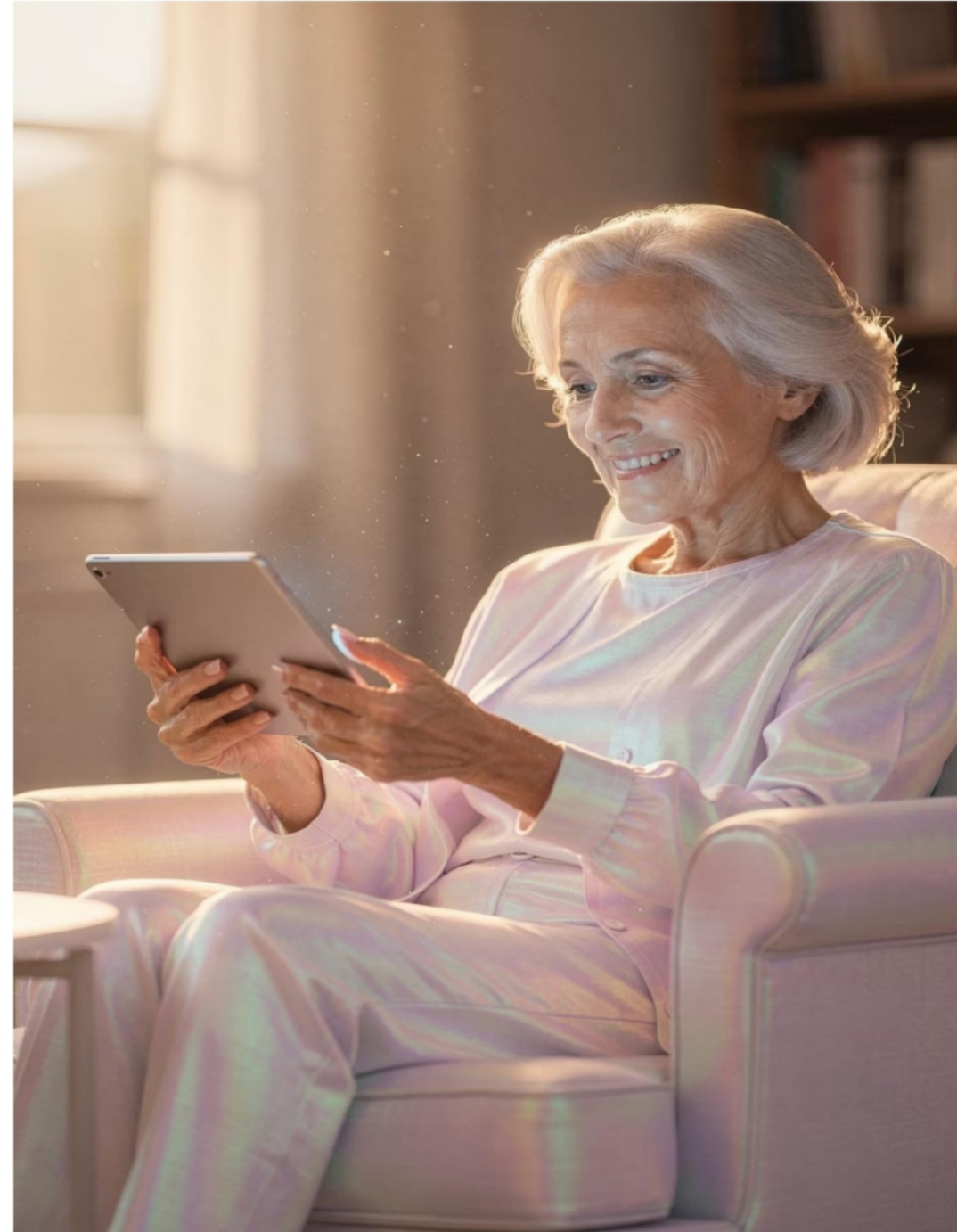
GrandPad vs iPad: Choosing the Right Fit for Seniors



GrandPad vs iPad

Choosing the Right Fit for Seniors

RED GLEN ELECTRONICS



860-776-3306



RGE4Help@gmail.com



www.redglenelectronics.com

Why This Matters

Families Want Ease

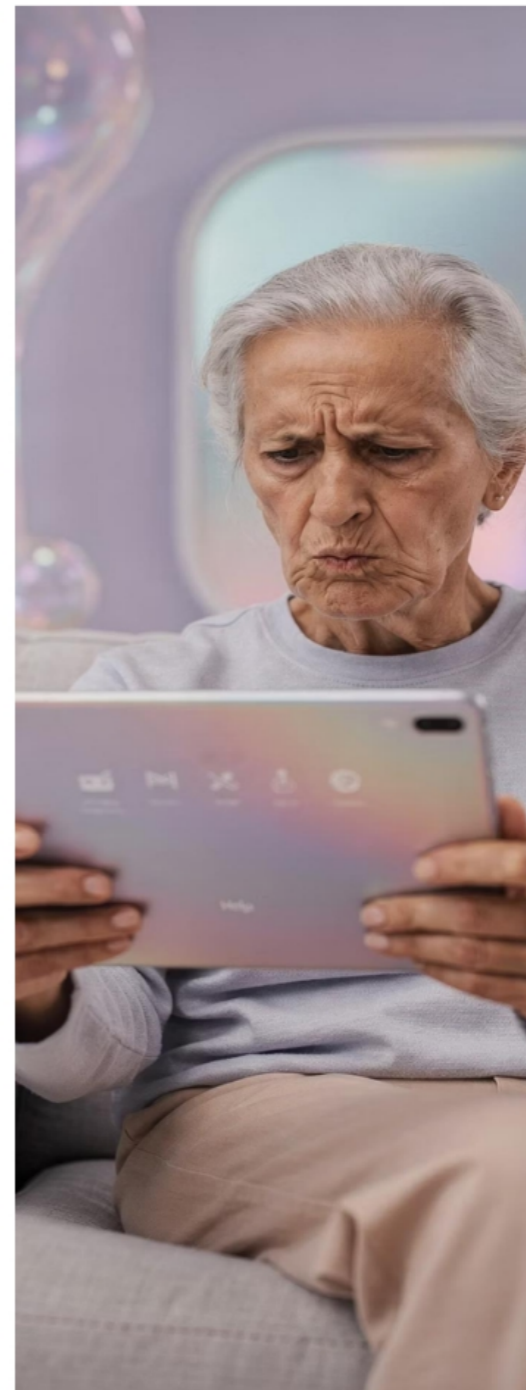
Everyone is searching for the simplest option available.

Seniors Want Reliability

The device just needs to work — every single time.

Mismatch = Frustration

Most problems aren't tech problems — they're fit problems.



860-776-3306



RGE4Help@gmail.com



www.redglenelectronics.com

The Common Mistake

"Let's just get the simplest thing."

Simple sounds good... until it becomes too limiting. Choosing a device based on simplicity alone can leave seniors without the tools they actually need – and families back at square one.



860-776-3306



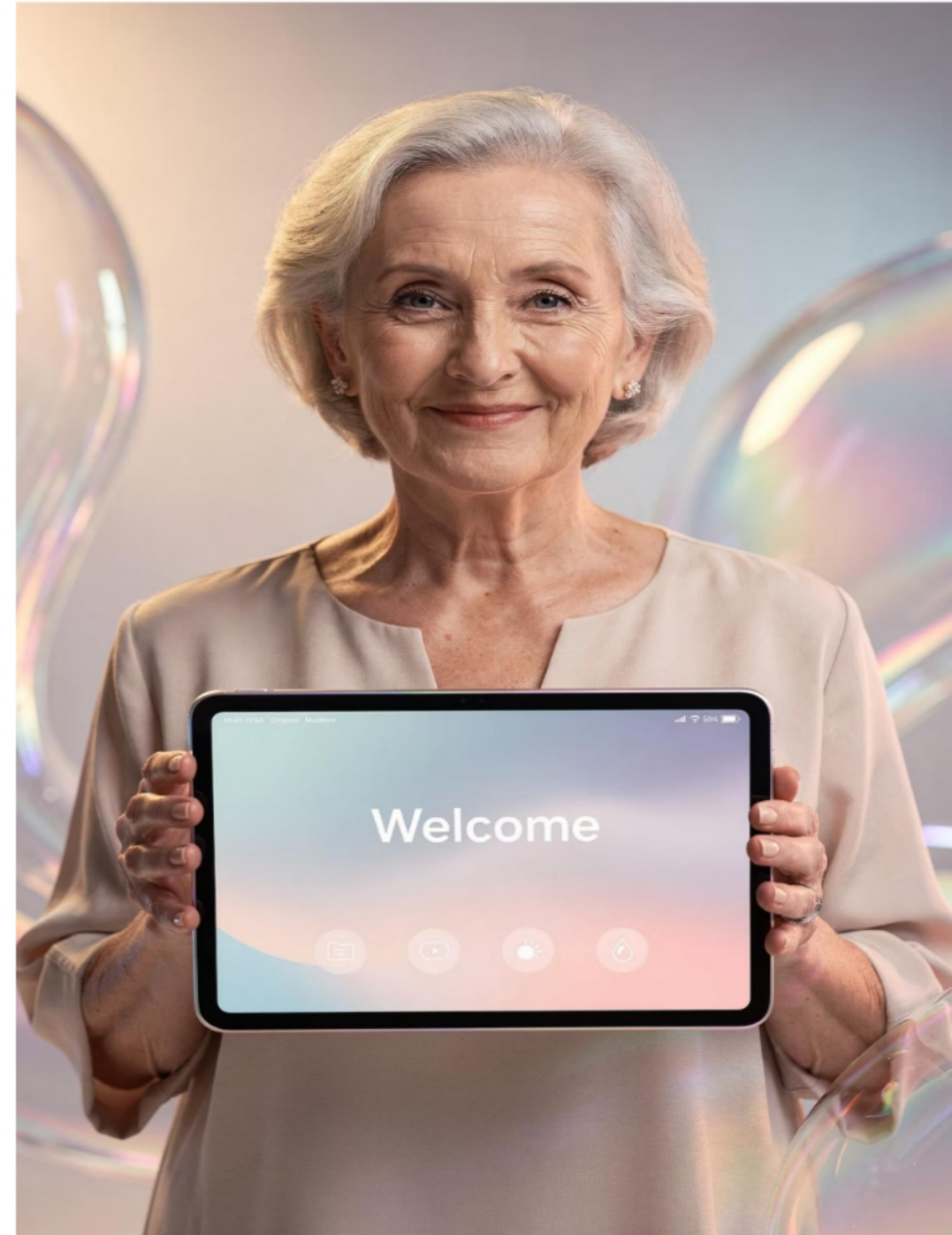
RGE4Help@gmail.com



www.redglenelectronics.com

No "best device." Only the right fit.

The goal isn't to find the most popular tablet or the cheapest option – it's to match the device to the person using it. That's the whole ballgame.



860-776-3306



RGE4Help@gmail.com



www.redglenelectronics.com

The Core Question

Every decision in this comparison comes down to one single trade-off:

Simplicity

A guided, controlled experience with fewer choices and less to manage.

Freedom

A flexible, open experience with full access to apps, internet, and exploration.



860-776-3306



RGE4Help@gmail.com



www.redglenelectronics.com

Two Very Different Philosophies

GrandPad → Guided



A curated, family-managed environment designed to remove confusion entirely.

iPad → Flexible



A full-featured device that opens the entire digital world to the user.

What Is GrandPad?

GrandPad is a guided, family-managed device – not really a traditional tablet. Think of it more as a **controlled communication hub** built specifically for seniors who want connection without complexity.



860-776-3306



RGE4Help@gmail.com



www.redglenelectronics.com

GrandPad Strengths



Easy Calls

Tap a face, you're talking. That's the magic.



Photos

Family can send photos directly to the device.



Messaging

Simple, clear communication with family members.



No Confusion

A clean, distraction-free interface every time.



860-776-3306



RGE4Help@gmail.com



www.redglenelectronics.com

GrandPad Limits

No Internet Browsing


Users cannot search the web or visit websites independently.

No App Store

There is no ability to download or explore new applications.

No Exploration

The experience is curated – what the family sets up is what exists.

 GrandPad keeps things simple by limiting options. That's the deliberate design choice.



860-776-3306



RGE4Help@gmail.com



www.redglenelectronics.com

Removes complexity by removing control.

That's the GrandPad trade-off in one sentence. For some seniors, that's exactly right. For others, it's too restrictive. Understanding this distinction is everything.



860-776-3306



RGE4Help@gmail.com



www.redglenelectronics.com



What Is an iPad?

The iPad is a **flexible, full-featured device** – the complete digital toolbox. It gives seniors access to the entire internet, thousands of apps, entertainment, learning, and communication all in one place.



860-776-3306



RGE4Help@gmail.com



www.redglenelectronics.com

iPad Strengths



Internet Access

Browse, search, and explore the full web freely.



Apps

Thousands of apps for every interest and need.



Learning

Courses, news, books, and endless discovery.



Communication

FaceTime, email, messaging – all built in.

The iPad opens the whole world. It's the full digital experience.



860-776-3306



RGE4Help@gmail.com



www.redglenelectronics.com

iPad Challenges

What to Expect

- A learning curve at the start
- More choices to navigate
- Requires digital awareness

The Reality

More power means more responsibility. The iPad rewards those willing to invest a little time upfront. For the right person, that investment pays off enormously.



860-776-3306



RGE4Help@gmail.com



www.redglenelectronics.com

Safety Comparison

GrandPad

Maximum protection. The closed system means scams, phishing, and harmful content simply can't reach the user.

iPad

Strong + awareness. Apple provides robust protections, but some user judgment is still required to stay safe online.

📄 Neither is unsafe – but they protect in different ways.



860-776-3306



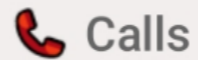
RGE4Help@gmail.com



www.redglenelectronics.com



Communication: No Wrong Choice



Calls

Both devices support voice and video calls.



Messaging

Text and photo messages work on both platforms.



Photos

Family can share photos on either device easily.



860-776-3306



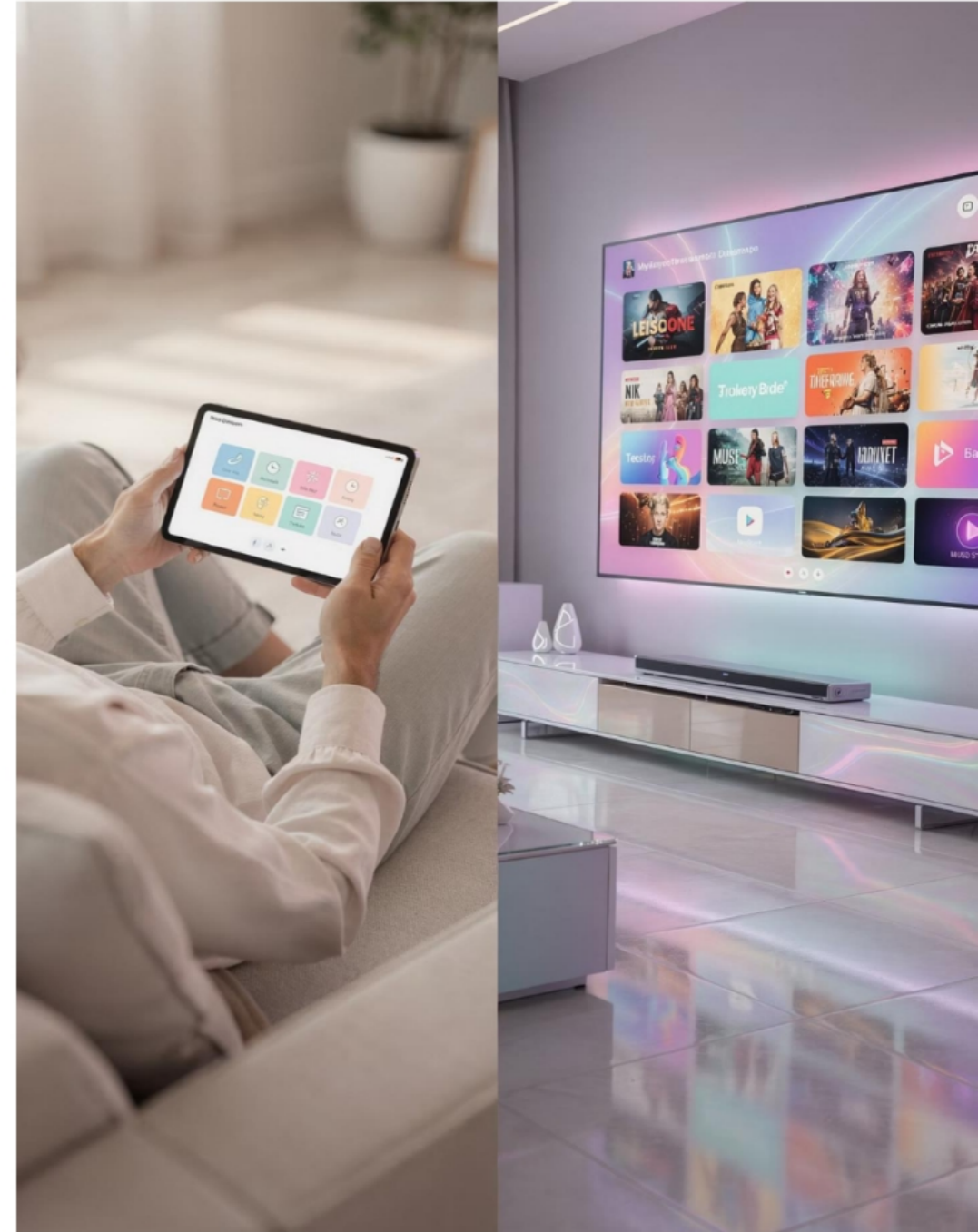
RGE4Help@gmail.com



www.redglenelectronics.com

The Entertainment Gap

This is where the differences show up fast. For seniors who want to watch, explore, or play – the gap between these two devices is significant.



860-776-3306



RGE4Help@gmail.com



www.redglenelectronics.com



YouTube Example

GrandPad

Family can *send* a specific video to the device – but the senior cannot browse or search YouTube independently.

iPad

Full YouTube access. Search, subscribe, explore, and watch anything at any time – complete independence.



860-776-3306



RGE4Help@gmail.com



www.redglenelectronics.com

Shopping Example

GrandPad

Not available. No internet browsing means no online shopping — period.

iPad

Fully available. Amazon, grocery delivery, clothing — the entire e-commerce world is accessible.

📄 For seniors who value independence in daily tasks, this distinction matters enormously.



860-776-3306



RGE4Help@gmail.com



www.redglenelectronics.com

Two User Types



Keep It Simple

Wants ease, avoids complexity, prefers guidance. Values peace of mind over options.

Now we match the tool to the person.



Still Curious

Wants to explore, willing to learn, values independence. Sees technology as an opportunity.



860-776-3306



RGE4Help@gmail.com



www.redglenelectronics.com

Profile: Keep It Simple

Wants Ease Above All

Every interaction should feel effortless and familiar.

Avoids Complexity

Too many choices cause stress, not excitement.

Prefers Guidance

Feels most comfortable when the path is clear and set.

THIS IS GRANDPAD TERRITORY.



860-776-3306



RGE4Help@gmail.com



www.redglenelectronics.com



Profile: Still Curious

Wants to Explore

Enjoys discovering new content, apps, and ideas independently.

Willing to Learn

Embraces a learning curve as part of the experience.

Values Independence

Wants to do things on their own terms, at their own pace.

THIS IS IPAD TERRITORY.



860-776-3306



RGE4Help@gmail.com



www.redglenelectronics.com

It's about preference — not ability.

Framing the conversation this way keeps it positive and respectful. Neither choice implies a limitation — it simply reflects what kind of experience the person values most. That distinction matters.



860-776-3306



RGE4Help@gmail.com



www.redglenelectronics.com



The Family Role

Both devices require ongoing family support. There is no such thing as "set it and forget it" – regardless of which device you choose. The nature of that support just looks different depending on the platform.



860-776-3306



RGE4Help@gmail.com



www.redglenelectronics.com

Supporting a GrandPad User

01

Manage the Admin

The family administrator controls the entire system remotely.

02


Add Contacts

Only approved contacts can communicate with the senior.

03

Send Content

Photos, videos, and messages are pushed directly to the device.

 You help run it – they enjoy it.



860-776-3306



RGE4Help@gmail.com



www.redglenelectronics.com

Supporting an iPad User

01

Initial Setup

Configure accessibility settings, Apple ID, and key apps from the start.

02

Teach the Basics

Walk through core functions until they feel comfortable and confident.

03

Build Confidence

Encourage independence gradually – the front-loaded effort pays off later.



860-776-3306



RGE4Help@gmail.com



www.redglenelectronics.com

What NOT To Do

"Plop, drop, and walk away."

That's how devices end up in drawers — unused, uncharged, and forgotten. Whether it's a GrandPad or an iPad, handing over a device without support is a recipe for frustration and wasted money.



860-776-3306



RGE4Help@gmail.com



www.redglenelectronics.com

The Hybrid Idea

GrandPad + TV

Pair the GrandPad with a smart TV setup to solve its entertainment limitations – giving seniors the best of both worlds.

Why It Works

The GrandPad handles communication beautifully. A separate TV device handles entertainment. Each tool does one job – and does it well. No compromise required.



860-776-3306



RGE4Help@gmail.com



www.redglenelectronics.com

The Roku Example

Simple Remote

Easy to hold, easy to use – minimal buttons.

Big Screen

Comfortable viewing without squinting at a tablet.

Easy Videos

YouTube, Netflix, and more – all on the TV.

THE PERFECT COMPANION DEVICE FOR A GRANDPAD USER.



860-776-3306



RGE4Help@gmail.com

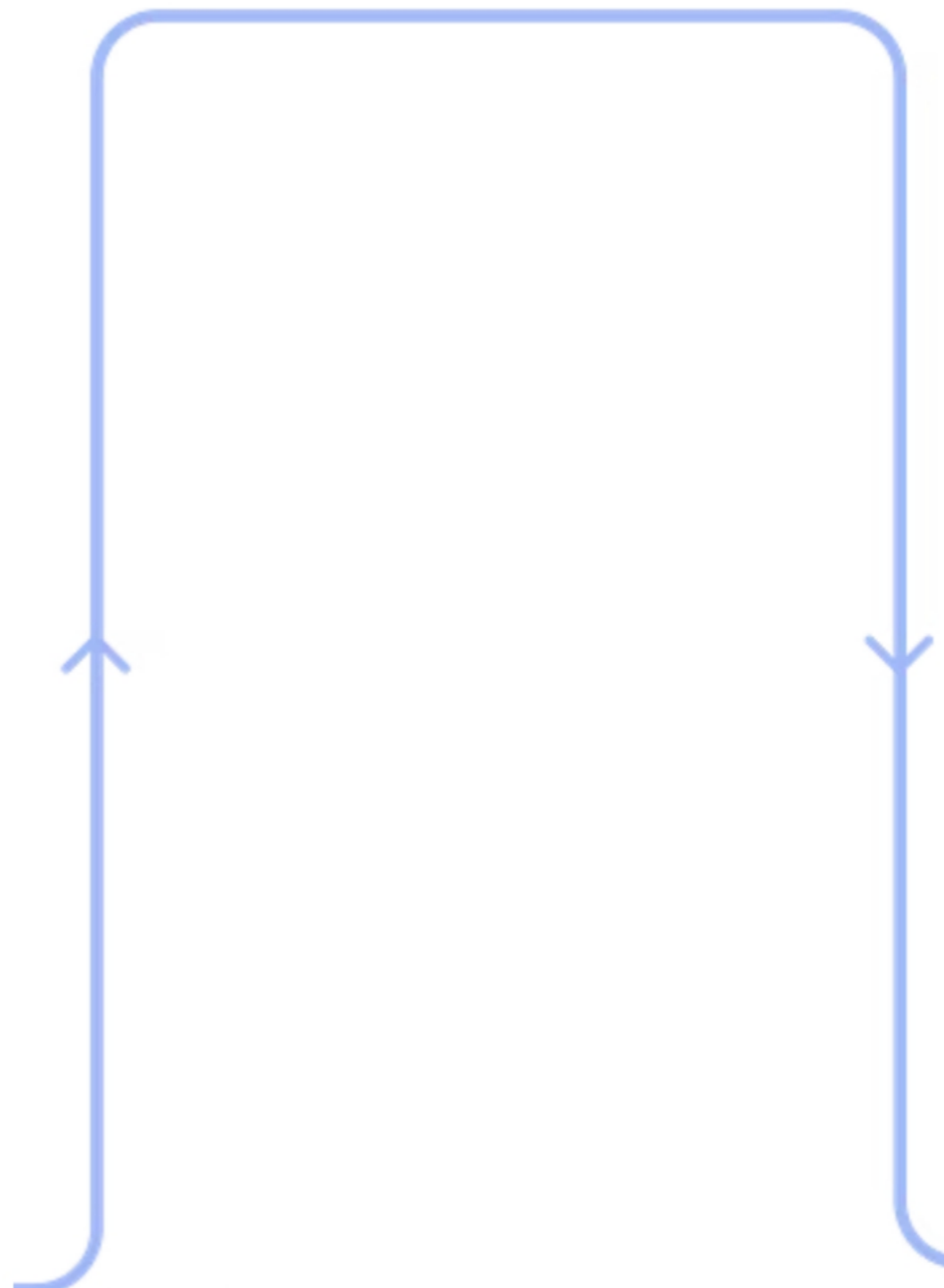


www.redglenelectronics.com

A Day in the Life

- 1** — **Morning**
Photos on GrandPad
- 2** — **Afternoon**
Video calls on GrandPad
- 3** — **Evening**
TV streaming with Roku

Each device does one job well. The result is a complete, satisfying daily digital experience — without any single device being overwhelmed.



860-776-3306



RGE4Help@gmail.com



www.redglenelectronics.com


The Decision Shortcut

Want Simplicity?

→ **GrandPad** – Guided, managed, and worry-free for the whole family.

Want Freedom?

→ **iPad** – Flexible, full-featured, and open to the whole world.

 Keep it easy for families. When in doubt, come back to this shortcut.



860-776-3306



RGE4Help@gmail.com



www.redglenelectronics.com

The Cost of the Wrong Choice

3

Real Costs

Frustration, disuse, and wasted money – the three outcomes of a poor fit.

Frustration

The senior struggles and gives up.

Disuse

The device sits in a drawer, untouched.

Wasted Money

The investment delivers zero return.

WE'RE HERE TO PREVENT EXACTLY THIS.



860-776-3306



RGE4Help@gmail.com



www.redglenelectronics.com

Confidence, not complexity.

That's the mission. Every recommendation, every setup, every training session – it all comes back to this. Technology should make seniors feel capable, not confused.



860-776-3306



RGE4Help@gmail.com



www.redglenelectronics.com

How RGE Helps



Selection

We help identify the right device for the right person.



Training

We teach seniors and families how to use their device confidently.



Setup

We configure everything so it's ready to use from day one.



Support

We're here when questions come up – because they always do.



860-776-3306



RGE4Help@gmail.com



www.redglenelectronics.com

Let's Choose the Right Fit First

"Better to decide right than fix later."

A consultation before purchase saves time, money, and frustration. RGE walks families through the decision so the first choice is the right choice — no returns, no regrets, no devices collecting dust.



860-776-3306



RGE4Help@gmail.com



www.redglenelectronics.com



Fit matters more than features.

Always match the person first. The most powerful device in the world is worthless if it doesn't fit the person using it. This is the principle that guides every recommendation we make at Red Glen Electronics.



860-776-3306



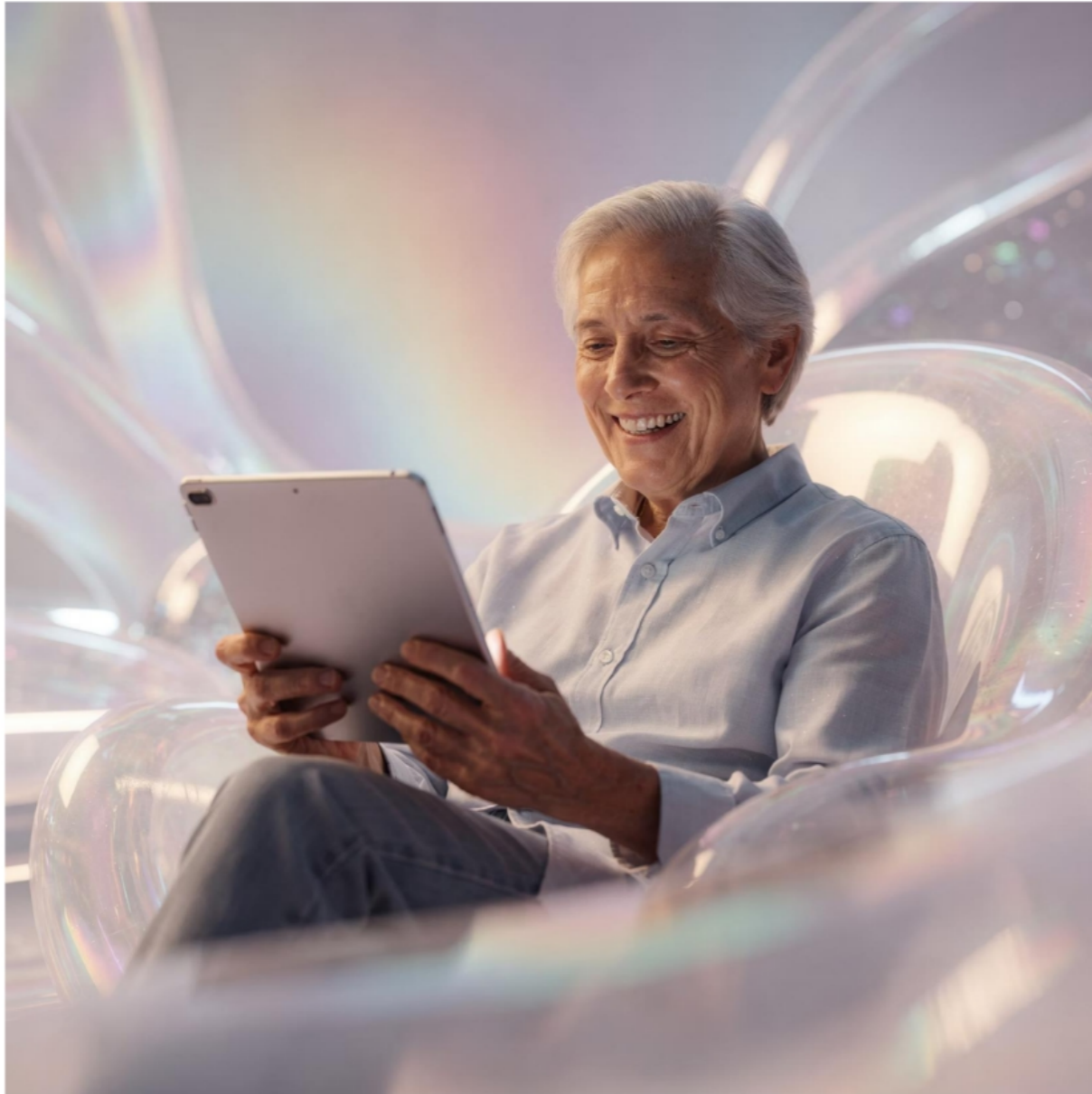
RGE4Help@gmail.com



www.redglenelectronics.com

The best device is the one they'll use.

That's the only metric that counts. Not specs. Not price. Not what's popular. The right device is the one that gets picked up every day – and brings real connection and joy.



860-776-3306



RGE4Help@gmail.com



www.redglenelectronics.com



Red Glen Electronics

Helping You Own Your Tech

Making technology simple, approachable, and actually useful – for seniors and the families who love them. That's what we're here for.

Selection

Right device, right person.

Setup

Ready from day one.

Training

Confidence, not confusion.

Support

We're always here.



860-776-3306



RGE4Help@gmail.com



www.redglenelectronics.com



guide.